

The first new project in 16 years in the Homat Series luxurious rental residences for foreigners HOMAT SHARON completed on June 30

We are pleased to announce that Nippon Steel Kowa Real Estate Co., Ltd. (Head Office: Minato-ku, Tokyo, President: Yasuhiko Imaizumi, hereinafter referred to as "the Company") completed the upscale rental housing Homat Sharon for foreign executives in Minami-azabu, Minato-ku, Tokyo on June 30.

In 1965, when there was not sufficient housing for foreign executives to live comfortably, the Company launched the upscale rental housing business for foreigners for the first time in the industry. Since then, the Company has been promoting this business focusing on the prime areas in central Tokyo as the pioneer in this field for half a century. As Tokyo continues to transform itself into an international city, we are providing high-quality and comfortable living environments as important infrastructure that supports the lives of foreign executive families living in Japan.

This project has constructed a total of 55 rental housing units with six stories above ground and one below on a site of approximately 6,085 m², which consists of the site of the old Homat Sharon, which was completed in 1984, and its adjacent area on the east (approx. 2,780 m²). The average occupied area of the units is 210m², mainly with a four-bedroom layout.

This is the first new project in the Homat luxurious rental residences for foreign executives in 16 years since the middle- and high-rise housing Akasaka Intercity/Homat Viscount completed in 2005. It is also the development of the first and largest low-rise Homat in 34 years and the flagship of the Company's luxurious rental residences for foreign executives.

The development area of Homat Sharon covers government agencies such as the Embassy of France, the Embassy of Germany, and the Delegation of the EU, as well as international schools and Arisugawa-no-miya Memorial Park. The international environment with abundant greenery is being appraised highly particularly by foreign residents. The Company currently owns nine luxurious rental residences for foreign executives and manages approximately 300 units in the Azabu/Hiroo area and the Akasaka area.

Nippon Steel Kowa Real Estate Co., Ltd.



NIPPON STEEL KOWA
REAL ESTATE



External appearance



Main entrance

Nippon Steel Kowa Real Estate Co., Ltd.

AKASAKA INTERCITY AIR, 1-8-1 Akasaka, Minato-ku, Tokyo 107-0052
Phone: 03-6774-8000 (main number) Fax: 03-6774-8328 <http://www.nskre.co.jp>

Features of the shared space

The building exterior, the external structures, and the planting incorporate a Japanese taste. There is also a wide-open entrance lobby with a ceiling height of 5.5 m, an aerial garden with light and greenery, and a calm lounge with a fireplace.

The basement is equipped with a party room with natural light coming in from the top light, a kids' corner, and a fitness room, while at the rooftop terrace, barbecue kitchens and a kids' area exist. These facilities offer great convenience to residents and help in building a community.

In addition, bilingual concierge services are available 24 hours a day, 365 days a year, to assist all aspects of residents' life.



Entrance lobby

Nippon Steel Kowa Real Estate Co., Ltd.

AKASAKA INTERCITY AIR, 1-8-1 Akasaka, Minato-ku, Tokyo 107-0052
Phone: 03-6774-8000 (main number) Fax: 03-6774-8328 <http://www.nskre.co.jp>



Rooftop terrace

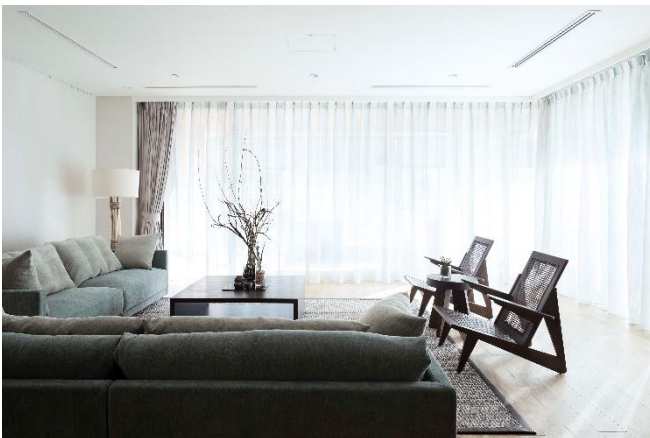


Barbecue kitchens with large grills

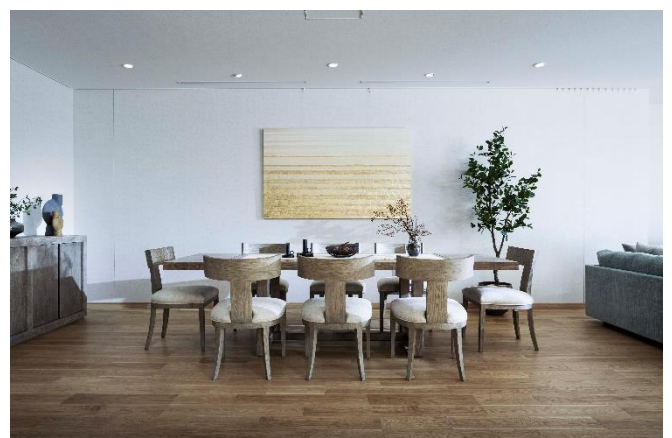
Features of the living space

The standard layout of Homat Sharon is tailored to the lifestyles of Western people with a large occupied area (210 m² on average) as a matter of course, and the layout of 4 bedrooms + 2 bathrooms + 1 powder room.

Our product planning is based on the principle known as P/P Separation, which separates the public zone that welcomes guests from the private zone where family members can relax.



Living room



Dining area

Nippon Steel Kowa Real Estate Co., Ltd.

AKASAKA INTERCITY AIR, 1-8-1 Akasaka, Minato-ku, Tokyo 107-0052
Phone: 03-6774-8000 (main number) Fax: 03-6774-8328 <http://www.nskre.co.jp>



NIPPON STEEL KOWA
REAL ESTATE



Bedroom



Kitchen

Nippon Steel Kowa Real Estate Co., Ltd.

AKASAKA INTERCITY AIR, 1-8-1 Akasaka, Minato-ku, Tokyo 107-0052
Phone: 03-6774-8000 (main number) Fax: 03-6774-8328 <http://www.nskre.co.jp>



NIPPON STEEL KOWA
REAL ESTATE

In addition to the Homat Series luxurious rental residences for foreign executives, the Company has been developing and supplying upscale rental for Japanese executives in recent years in order to meet market needs. We will continue working to provide high-quality and high-value-added rental residences that enhances the attractiveness of Tokyo as an international city by inheriting the experience and history we have cultivated with Homat.

Property outline

Property name:	HOMAT SHARON
Location:	4-9-3 Minami-azabu, Minato-ku, Tokyo
Transportation:	Nine minutes' walk from Hiroo Station on the Tokyo Metro Hibiya lines
Site area:	6,085m ²
Total number of units:	55
Structure and size:	Six stories above ground and one story below ground, reinforced concrete structure
Occupied area:	155.08m ² ~303.35m ²
Layout:	3-5 bedrooms
Design and construction:	Obayashi Corporation
Design and supervision:	HOMAT HOMES, Ltd.
Completion:	June 30, 2021

Contact information for this release

Yoshida, Public Relations Office, Nippon Steel Kowa Real Estate Co., Ltd.

Phone: 080-8438-9224 E-mail: mikiko.yoshida@nskre.co.jp

Nippon Steel Kowa Real Estate Co., Ltd.

AKASAKA INTERCITY AIR, 1-8-1 Akasaka, Minato-ku, Tokyo 107-0052
Phone: 03-6774-8000 (main number) Fax: 03-6774-8328 <http://www.nskre.co.jp>